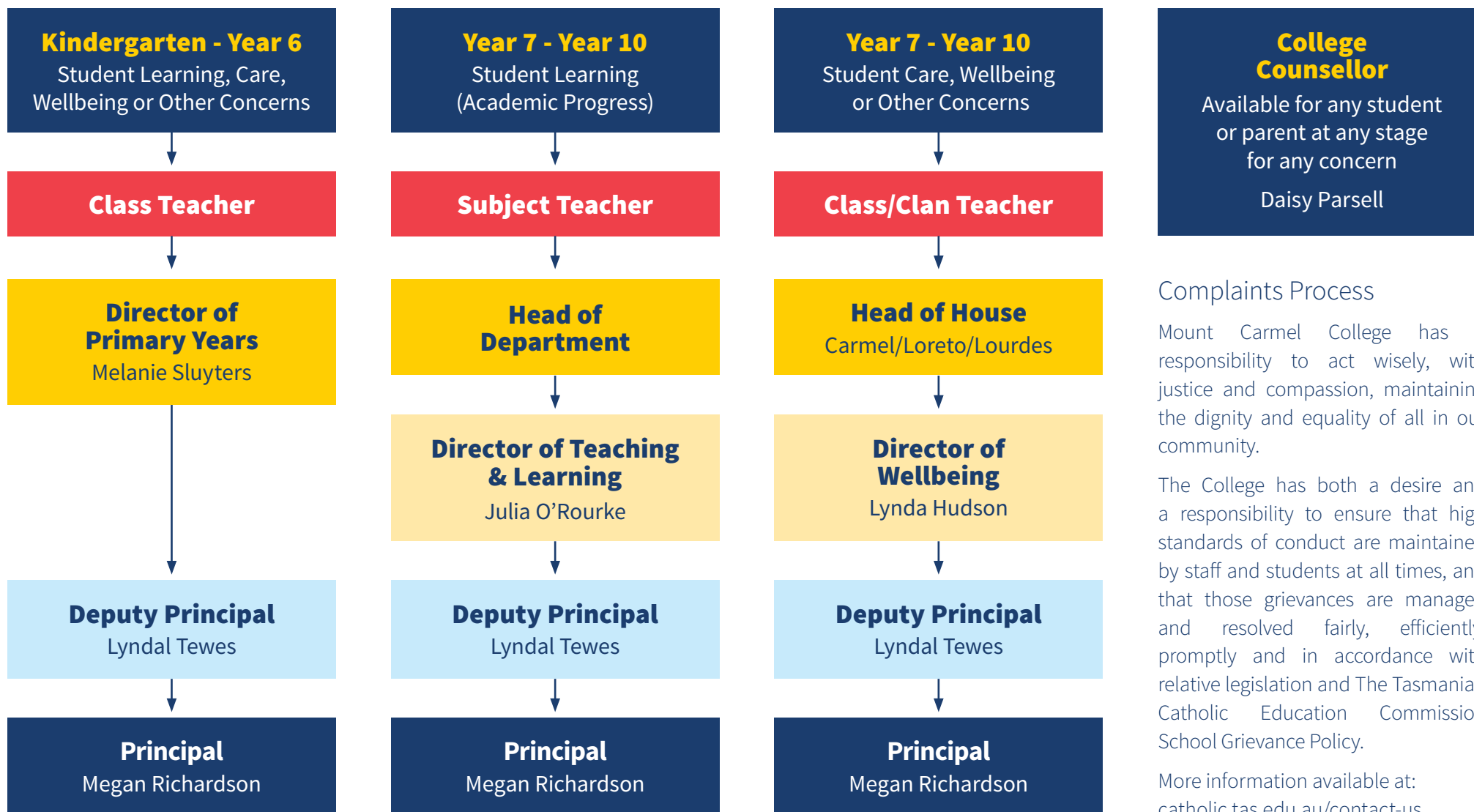


# Communication Flowchart

This communication flowchart helps parents and carers know who to contact within the College. It saves time by guiding you to the right person, ensuring concerns are addressed quickly. This clarity allows for communication to become smoother, building trust and a strong partnership between families and the College.



## Complaints Process

Mount Carmel College has a responsibility to act wisely, with justice and compassion, maintaining the dignity and equality of all in our community.

The College has both a desire and a responsibility to ensure that high standards of conduct are maintained by staff and students at all times, and that those grievances are managed and resolved fairly, efficiently, promptly and in accordance with relative legislation and The Tasmanian Catholic Education Commission School Grievance Policy.

More information available at:  
[catholic.tas.edu.au/contact-us](http://catholic.tas.edu.au/contact-us)